

Figure 10: Xenia Avenue and Corry Street Existing Conditions



10

CORRY STREET AND XENIA AVENUE

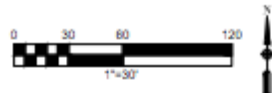


Figure 11: Xenia Avenue and Corry Street Intersection Redesign (S-4)

11



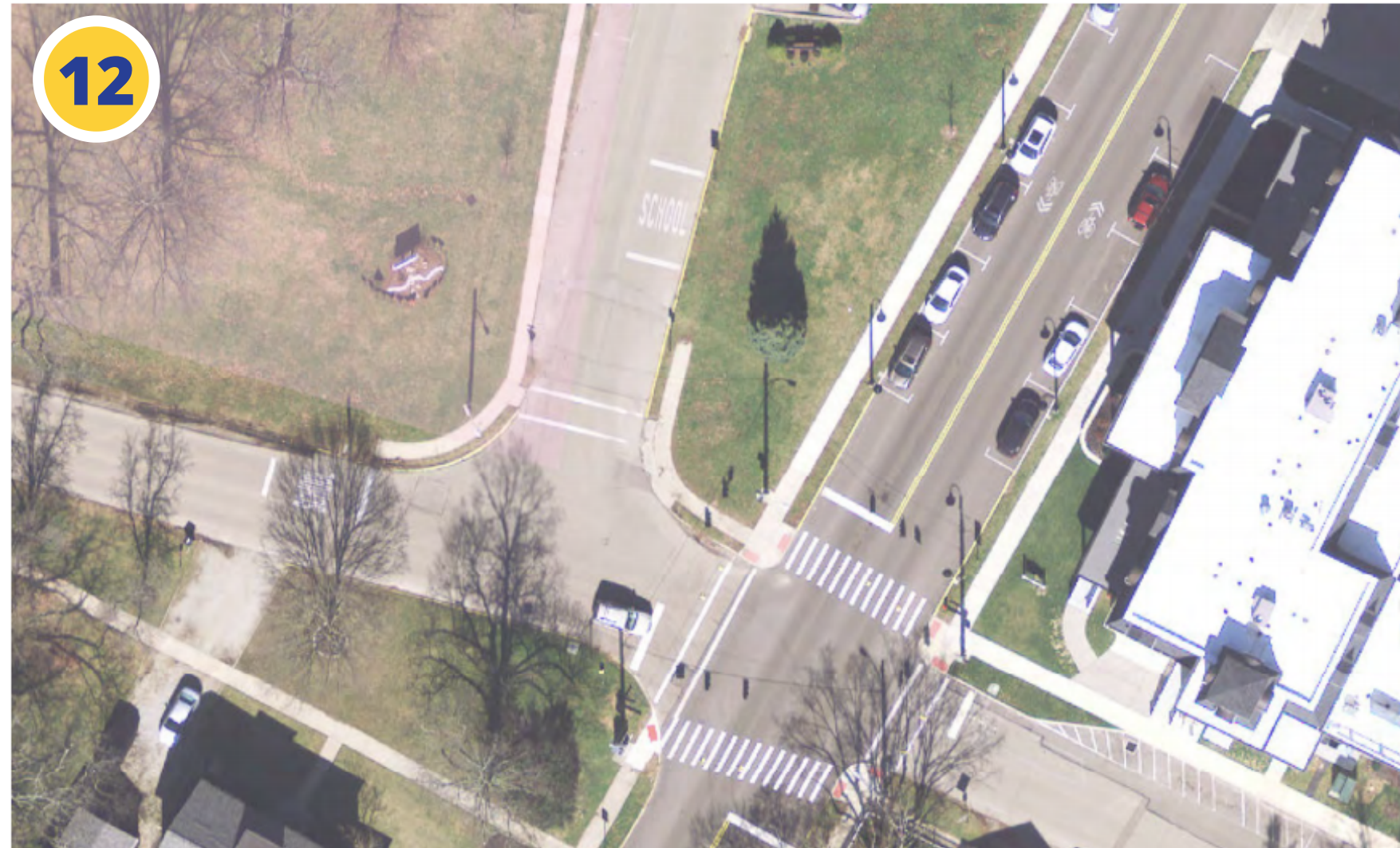
CORRY STREET AND XENIA AVENUE INTERSECTION REDESIGN CONCEPT

NOT FOR CONSTRUCTION



Figure 12: Walnut Street Limestone Street Existing Conditions

12

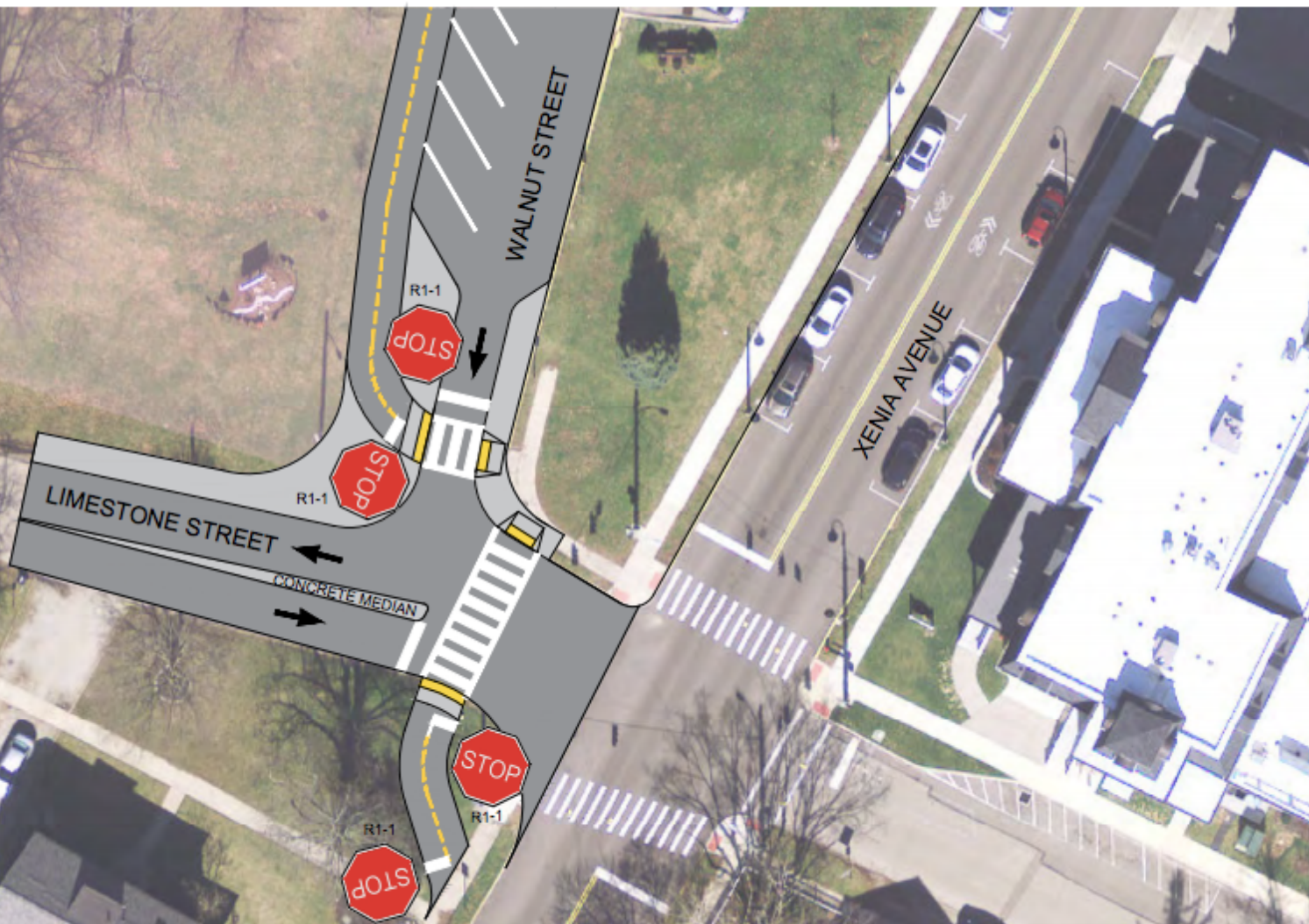


LIMESTONE STREET AND WALNUT STREET



Figure 13: Walnut Street and Limestone Street Traffic Calming (S-13) and Walnut Street Shared Use Path (L-20)

13



LIMESTONE STREET AND WALNUT STREET INTERSECTION REDESIGN CONCEPT

NOT FOR CONSTRUCTION



Figure 14: Dayton Street and Winter Street Existing Conditions

14



DAYTON STREET AND WINTER STREET

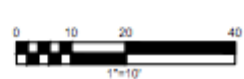
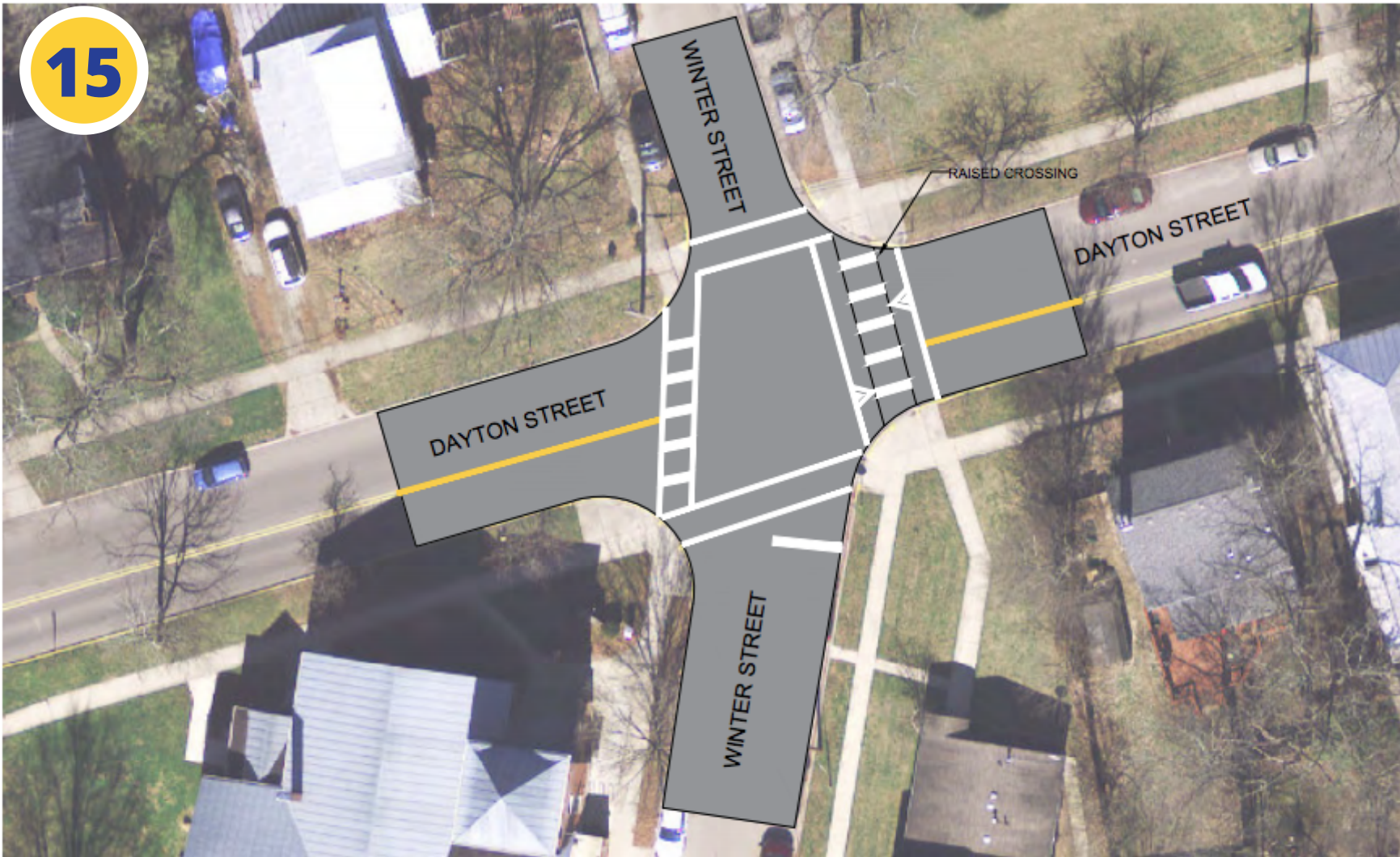


Figure 15: Dayton Street and Winter Street Traffic Calming and Crossing Treatments (S-6)

15



DAYTON STREET AND WINTER STREET RAISED CROSSING

NOT FOR CONSTRUCTION



Pop-Up Community Mapping Exercise Materials

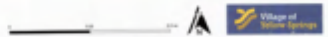
Project Maps

BIKING - ROUTE USED - ROUTE TO USE TO USE

- Destinations**
- Firehouse
 - Library
 - Police Station
 - School
 - Village Office
- Off-Street Bicycle/Pedestrian Infrastructure**
- Trail
 - Path
 - Traffic Counts for Streets/Trails

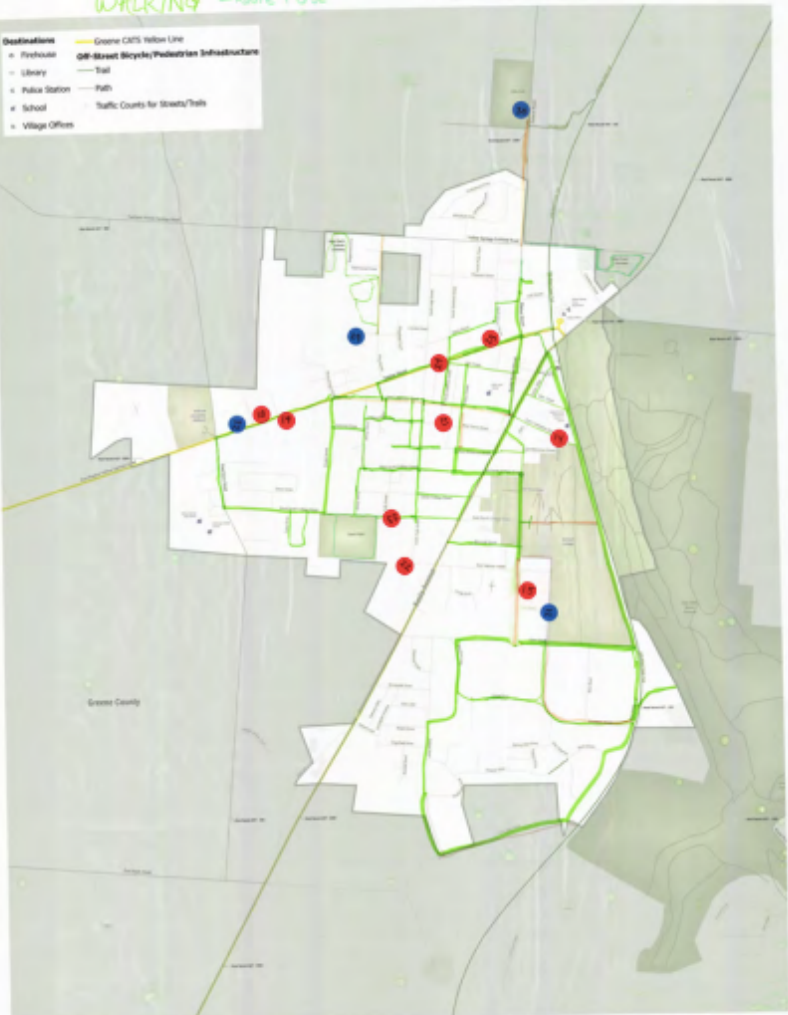


Village of Yellow Springs Active Transportation Plan
Community Mapping Activity



WALKING - ROUTE USED - ROUTE TO USE TO USE

- Destinations**
- Firehouse
 - Library
 - Police Station
 - School
 - Village Office
- Off-Street Bicycle/Pedestrian Infrastructure**
- Trail
 - Path
 - Traffic Counts for Streets/Trails



Village of Yellow Springs Active Transportation Plan
Community Mapping Activity

